



VAPING EPIDEMIC KNOW THE RISKS

An awareness campaign that aims to spread critical information about vaping and its associated risks.

VAPING RISKS



LUNG DISEASE

According to the American Lung Association, electronic cigarettes contain toxins and carcinogens that expose users to harmful effects including lung damage, reduced immune responses in the lungs, and inflammatory oral disease and irritations.



BRAIN DAMAGE ESPECIALLY TO TEENS

The brain of a teenager is still developing; therefore, any exposure to nicotine can be very risky. This can harm the brain and could cause attention and learning problems.



GATEWAY TO DRUG USE

Vaping can act as a gateway for people especially the youth to use more harmful drugs.



ADDICTION

Just like cigarette smoking, the act of vaping can be habit-forming. This can lead to an addictive behavior.

VAPING FACT SHEET

In light of the ongoing vaping-related outbreak that has affected the United States, The Lighthouse Treatment Center recognizes the importance of relaying critical information about vaping in order to educate the community better about its potential dangers.

VAPING

Vaping is the act of inhaling vapors using an electronic device such as a vape pen or e-cigarette.

VAPE PEN

Vape pens and devices are battery powered with a heating component to warm up the liquid cartridge in order to release the vapors

These can come in different forms and designs like pens, cylindrical tobacco looking e-cigarettes, and slim sticks that resemble USB flash drives.

JUUL

JUUL is by far the most popular vaping device at the moment controlling 70% of the vaping market. It resembles a USB flash drive making it easy to hide.

VAPING DRUGS

Vaping is also now being used to vape drugs and other narcotics. Marijuana, DMT, bath salts, liquid THC, and hash oil are just some of the drugs that are being vaped. Synthetic marijuana (Spice and K2) are highly popular among teenagers who vape.

REASONS FOR VAPING

Easier to hide from parents and in school; No typical tobacco smell or taste as it can come in fruity and candy-like flavors; Peer Pressure; Less conspicuous when used to smoke drugs

THC VAPE

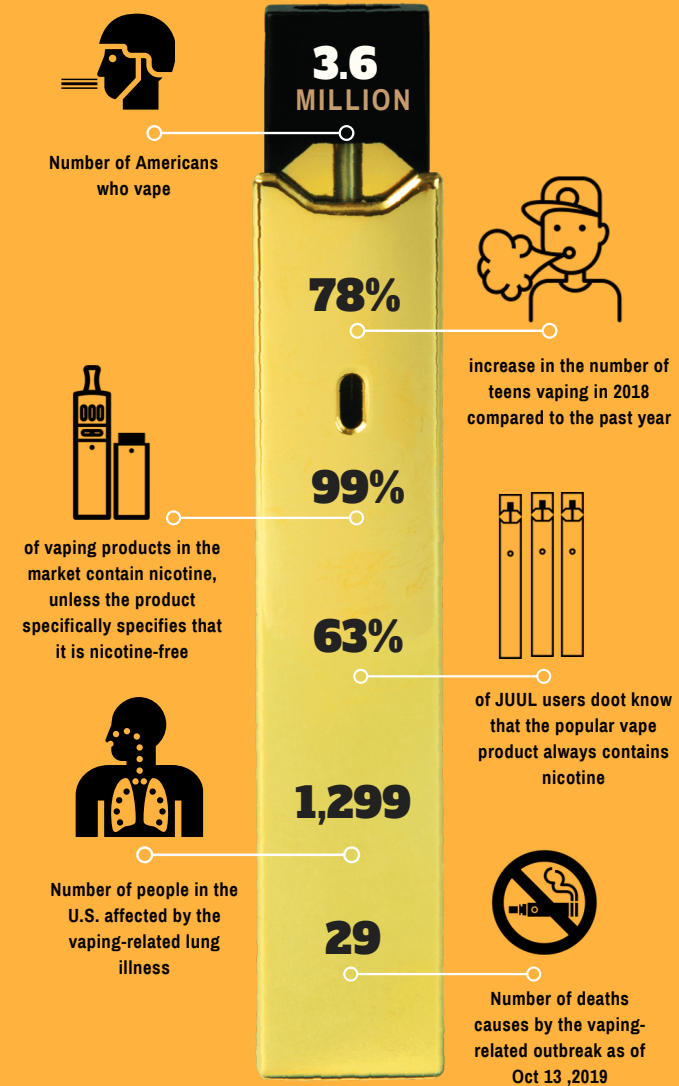
THC vape products are different from nicotine products because instead of nicotine, they contain THC, which is the psychoactive component found in marijuana.

CDC HEALTH WARNING

The Centers for Disease Control and Prevention or CDC issued a warning against vaping THC products. The CDC has found that the majority of the patients affected with the lung illness acquired their pre-filled THC vape products off the streets. While the use of THC vaping products have been found to be a common denominator among patients, officials haven't ruled out vaping products containing nicotine as a possible cause.

VAPING BY THE NUMBERS

STATS ABOUT VAPING



LIGHTHOUSE
Treatment Center

QUESTIONS? CALL FOR HELP NOW (855) 934-1100
www.lighthouse-treatment.com